

DENNIS

G-SERIES CASSETTE MOWER INSTRUCTION MANUAL



Product Application Matrix

Applications	FT Range	Razor Ultra	Razor	Simplex Range	SuperSix Range	G660 G760 G860	G26D G30D G34D	Premier Range	Verticut TT	S500 PLUS	Bray Hand Tools
Bowls, Croquet, Tennis	●	●	●		Croquet and Tennis only	Croquet and Tennis only	Croquet and Tennis only	Tennis Only	●	●	●
Football, Hockey, Rugby						●	●	●		●	
Cricket – Wicket	●	●	●						●	●	●
Cricket – Square	●	●	●	●	●	●	●	●	●	●	●
Cricket – Outfield						●	●	●			
Golf – Tees	●	●	●	●	●	●	●		●	●	●
Golf – Greens	●	●	●						●	●	●
Ornamental/Lawns	●			●	●	●	●	●	●	●	●
Local Authority/Contractors	●	●	●	●	●	●	●	●	●	●	●



NOTE:-

THIS INFORMATION IS INTENDED FOR GUIDANCE PURPOSES ONLY. WE RECOMMEND THAT YOU DISCUSS YOUR SPECIFIC REQUIREMENTS WITH OUR HEAD OFFICE, SALES MANAGERS OR YOUR LOCAL DENNIS DEALER

CERTIFICATE OF CONFORMITY

G-Series Cylinder mowers powered by Honda GX Petrol Engine

Manufacturer:- Howardson Ltd, Howardson Works, Kirk Langley, Derby, DE6 4NJ. UK

Owner of Technical Document:- Mr I.D. Howard, Howardson Ltd, Howardson Works Kirk Langley, Derby, DE6 4NJ, UK

I the under signed Declare that these machines:-

Model	Cutting Width	Power (Honda)	Measured Sound Power Level	Guaranteed Sound Power Level	Serial Number
G660	26" (660mm)	GX160	95 Lwa	98dB Lwa	See product ID Range
G760	30" (760mm)	GX160	95 Lwa	98dB Lwa	See product ID Range
G860	34" (860mm)	GX200	95 Lwa	98dB Lwa	See product ID Range

Tested at:- Howardson Works test site September 2011

Complies with the applicable requirements of:-

- Machine Directive 2006/42/EC
- Noise Directive 2000/14/EC (Annex VI Procedure 1)

Managing Director



Ian Howard

SERIAL NUMBERS



NOTE:-

MAKE A NOTE OF THE SERIAL NUMBER OF YOUR MACHINE AND ALWAYS QUOTE IT IN ANY COMMUNICATION WITH PERSONNEL AT DENNIS.

MACHINE SERIAL NUMBER

ENGINE SERIAL NUMBER

INTRODUCTION

The reliability and quality of performance of the **DENNIS G-SERIES** depends upon some simple care maintenance carried out regularly. This manual has been prepared to allow the user to carry out all such work.

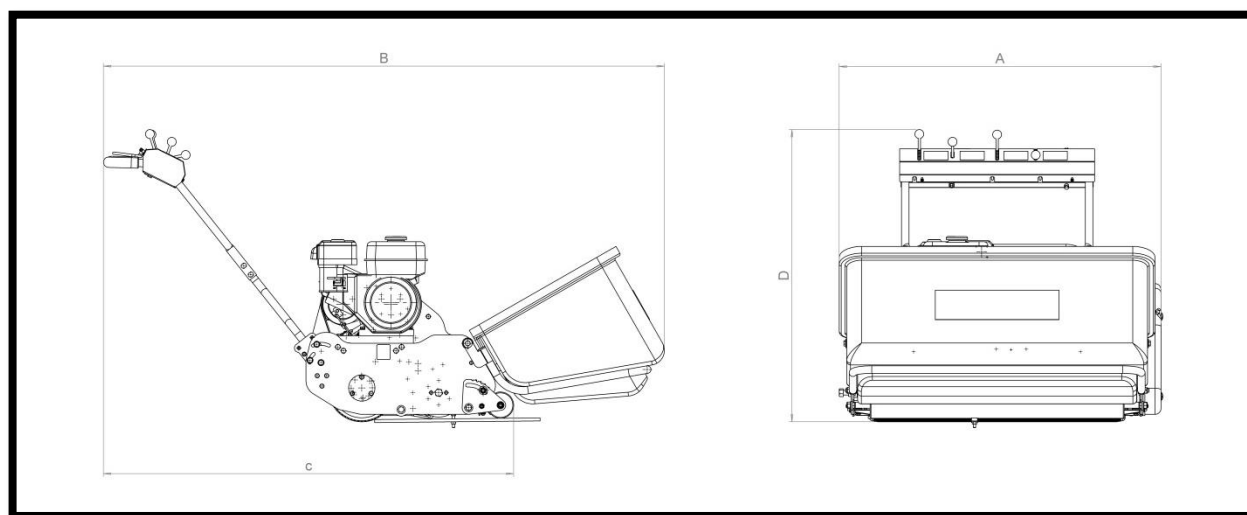
It is advisable to read the instructions carefully. Proper care and attention will enable the machine to give a continuous, satisfactory, and reliable service. Failure to carry out regular lubrication and maintenance as outlined in this manual may render any guarantee or warranty invalid.

In the case of any difficulty, or if further information or advice is required, our Service Department is always at your call. In the interests of speed and accuracy of information please quote the serial numbers of the machine and engine when making enquiries.

For the machine, this is to be found on a plate attached to the side frame. The engine number is stamped on either the crank case or the gear casing facing towards the front of the machine. We suggest you write the numbers on the front page of this book.

	Page
Declaration of Conformity.....	2
Serial Numbers.....	2
Introduction.....	2
Technical Data.....	3
Important Safety Instructions.....	3
Operating Instructions.....	4 - 6
Maintenance and Lubrication.....	7
Parts Listings.....	P0 – P7

TECHNICAL DATA



MODEL	G660	G760	G860
A – WIDTH (mm)	884	984	1084
B – LENGTH with Grass Box (mm)	1635	1635	1635
C – LENGTH without Grass Box (mm)	1121	1121	1121
D – Height (mm)	1119	1119	1119
Weight (Kg)	148	156	166
Cutting Width (mm)	660	760	860
Cylinder (Number of Blades)	6, 8	6, 8	4, 6, 8, 11
Height of Cut (mm)	9 - 56	9 - 56	9 - 56
Cut Performance (Clips/M) (4 Blade)	-	-	68
Cut Performance (Clips/M) (6 Blade)	103	103	103
Cut Performance (Clips/M) (8 Blade)	137	137	137
Cut Performance (Clips/M) (11 Blade)	-	-	189
Engine	Honda GX160	Honda GX160	Honda GX200
Drive System	"V" Belt	"V" Belt	"V" Belt
Final Drive	Poly "V" high performance belts under constant tension	Poly "V" high performance belts under constant tension	Poly "V" high performance belts under constant tension
Hand Arm Vibration	2.6	2.6	2.6
Measured Sound Power Level	95	95	95
Guaranteed Sound Power Level	98	98	98

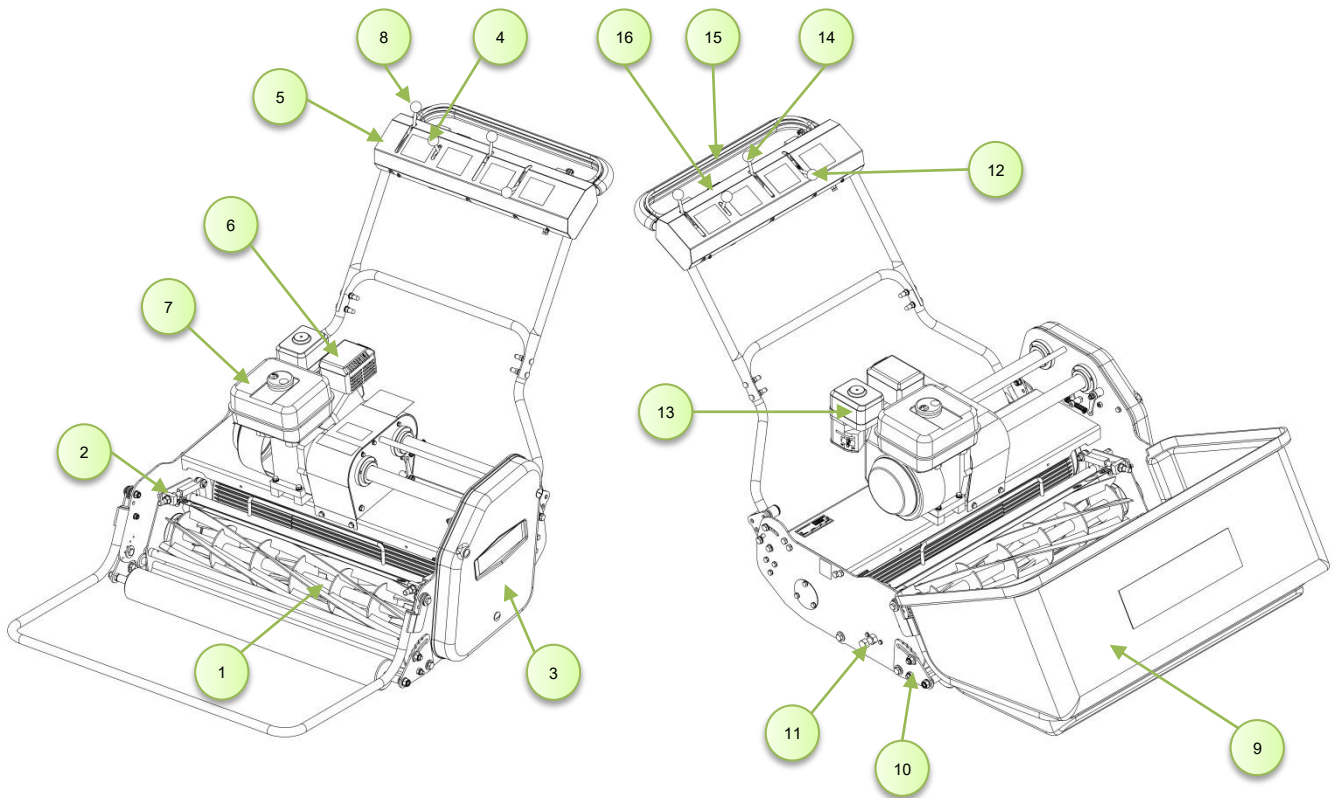
Machine Description

Manufactured with a 26" (66cm), 30" (76cm) or 34" (86cm) cutting width, this range of machines are powered by either a 5.5hp (26" & 30") or 6.5hp air cooled, single cylinder, four stroke petrol engine.

The rear roller and cutter are controlled independently via belt clutches operated from the console on the upper handle bar. (ITEM 5). A parking brake is fitted for added safety when working on sloping ground.

In the design of the machine, special attention has been given to the importance of easy service and maintenance with the construction based on a sectional assembly system. These are the Engine Unit, the Cassette Unit, the Rear Roller Unit and the Front Roller Unit, each of which can be readily removed individually from the main Frame Chassis Unit.

The interchangeable cassette system allows a variety of cassettes to be used for varying applications.



NUMBER	PART	NUMBER	PART
1	Cassette	9	Grass Box
2	Bottom Blade Adjuster Knob	10	Cutting Height Adjustment
3	Belt Guard	11	Cassette Retaining Pin
4	Throttle Control Lever	12	Cassette Control Lever
5	Operating Console	13	Air Filter
6	Exhaust	14	Driving Control Lever
7	Fuel Tank	15	Deadman's Handle
8	Brake lever	16	On/Off Switch